

# All You Can Eat Sushi & More

ZEN

**Evening Menu- £18.50**



## Uramaki

4 Pieces per portion

### California

Crabstick, prawn, avocado, cucumber, mayo & tobiko roe

### Dragon

Prawn katsu, mayo & tobiko roe

### Tori Katsu

Chicken katsu, mayo & sesame seeds

### Salmon & Avocado

Raw salmon, avocado, mayo & sesame seeds

Children (under 11)- £9.50 + 1 soft drink

## Futomaki

4 Pieces per portion

### Zen Special

Crispy roll with crabstick, prawn, cucumber, avocado & special sauce

### Futo

Crabstick, prawn, cucumber, avocado, sweet pickle, radish & mayo

### Spicy Salmon

Raw salmon & spicy mayo

### Veggie (v)

Sweet tofu, cucumber, radish & avocado

## Hosomaki

6 Pieces per portion

### Salmon

### Crabstick

### Avocado (v)

### Cucumber (v)

## Temaki

1 Hand Roll per portion

### California

Crabstick, prawn, avocado, cucumber, mayo & tobiko roe

### Prawn Katsu

With mayo & tobiko roe

### Salmon & Avocado

Raw salmon, avocado & mayo

### Veggie (v)

Sweet tofu, avocado, cucumber & radish

## Nigiri

2 pieces per portion

### Salmon

### Prawn

### Sweet Omelete

### Sweet Tofu (v)

## Appetisers

### Chicken Gyoza (6)

Steamed chicken dumplings

### Vegetable Gyoza (6) (v)

Steamed vegetable dumplings

### Veg Croquette (4) (v)

Mixed vegetables crispy patty

### Ebi Katsu (4)

Crispy king prawns with sweet chili sauce

### Edemame (1) (v)

Salted soy bean pods

### Miso Soup (1) (v)

With tofu & seaweed

### Seaweed Salad (1) (v)

With sesame dressings

### Tori Katsu Curry (1)

Chicken katsu with rice & curry sauce

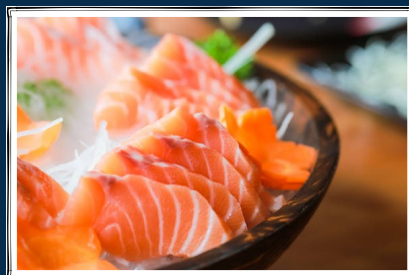
### Tonkotsu Soup Ramen (1)

Miso soup based noodle with roasted pork

## Salmon Sashimi

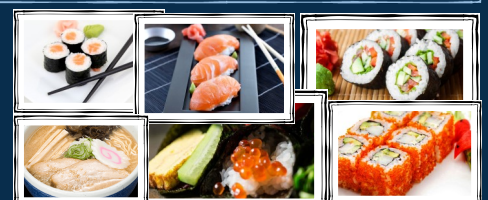
6 pieces

£2 Supplement



## Desserts

A selection of ice lolly you can choose from



Please note there is a limit of 6 items per order. All food is to be finish before the next order.

Please inform us of your allergies and dietary requirements.

There will be a 2 hours limit for peaked times. Thank you for your understanding.\*

\*T&C apply